

ROAD INDEX

A AQUILLA BLVD. C3 AQUILLA RD. A1-B6 ALDENSHIRE DR. C4 (see pg. D)	I cont	S SPENCER ST. B3-B4 STILLWELL RD. F3-63 STONE SPRINGS DR. C4
B BERKSHIRE DR. B3 KILE RD. F4-61	J	T TAYLORWELLS RD. C1-D6 TURNER DR. B3
C CHARDON WINDSOR RD. D1-G2 CLARIDON TROY RD. D1-D6 CORNELIA DR. B3 CLARIDON PARK DR. D-2	L LORING AVE. B3	U
D DURKEE RD. F6-G6 MAYFIELD RD. A4-64 MEADOWWOOD DR. B2 MERRITT RD. A6	M	V
E ENSIGN RD. D5-F5	N	W
F FOREST RD. E4-E6 OLD STATE RD. E1-66	O	X
G GOREDON DR. B3	P	Y
H HALL RD. C2-D3	Q	Z
I	R	

CLARIDON TOWNSHIP

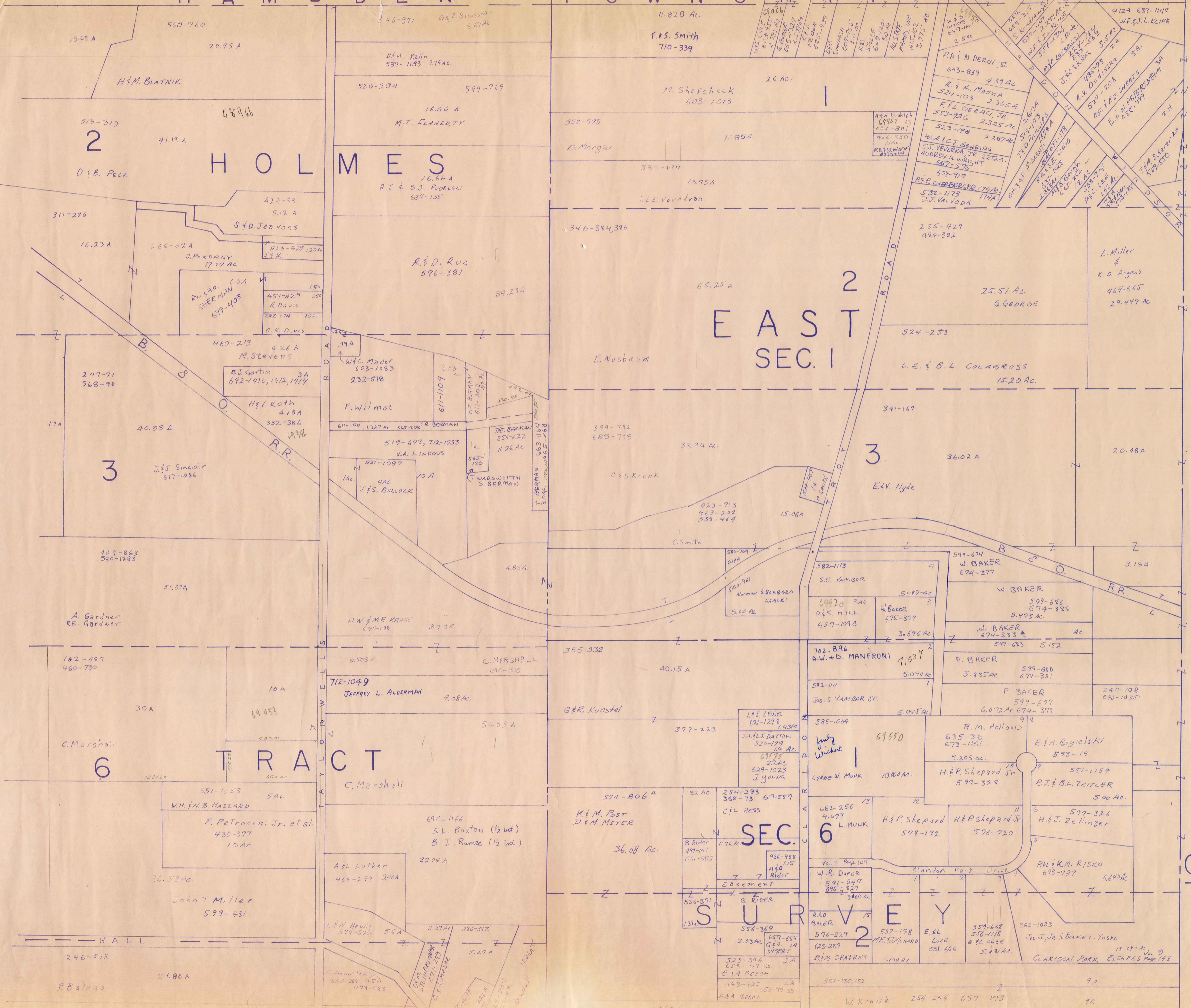
SCALE • 1" = 2000'

ROBERT E. PHILLIPS
GEAUGA COUNTY ENGINEER

--- UNPAVED ROAD
 = PAVED ROAD
 --- RAILROAD
 --- TOWNSHIP LINE

① CLARIDON LOCAL SCHOOL
 ② EAST CLARIDON METHODIST CHURCH
 ③ THE FIRST CONGREGATIONAL CHURCH
 ④ CHRISTIAN MISSIONARY ALLIANCE CH.
 ⑤ CLARIDON CENTER CEMETERY
 ⑥ EAST CLARIDON CEMETERY
 ⑦ WEST CLARIDON CEMETERY
 ⑧ CEMETERY
 ⑨ PLEASANT HILL COUNTY HOME
 ⑩ GEAUGA COUNTY COMM. HOSPITAL
 ⑪ CLARIDON TOWN HALL
 ⑫ U.S. POST OFFICE (CLARIDON)
 ⑬ GEAUGA COUNTY SAFETY CENTER
 ⑭ GEAUGA COUNTY WELFARE DEPT.
 ⑮
 ⑯

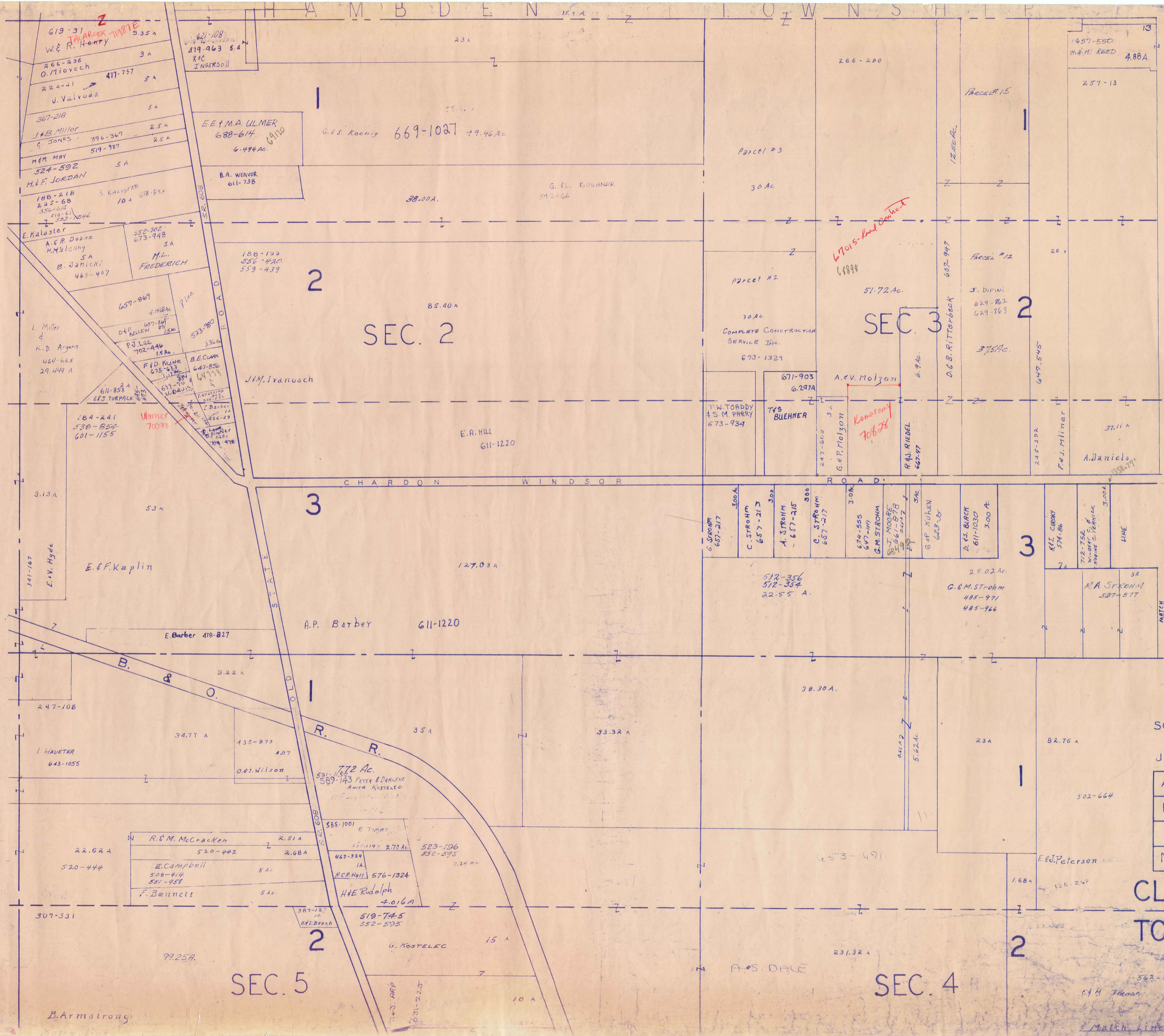
done 1-25



SCALE 1" = 300'
JAN 1, 1984

A	B	C	D
E	F	G	H
I	J	K	L
M	N	O	P

CLARIDON TOWNSHIP



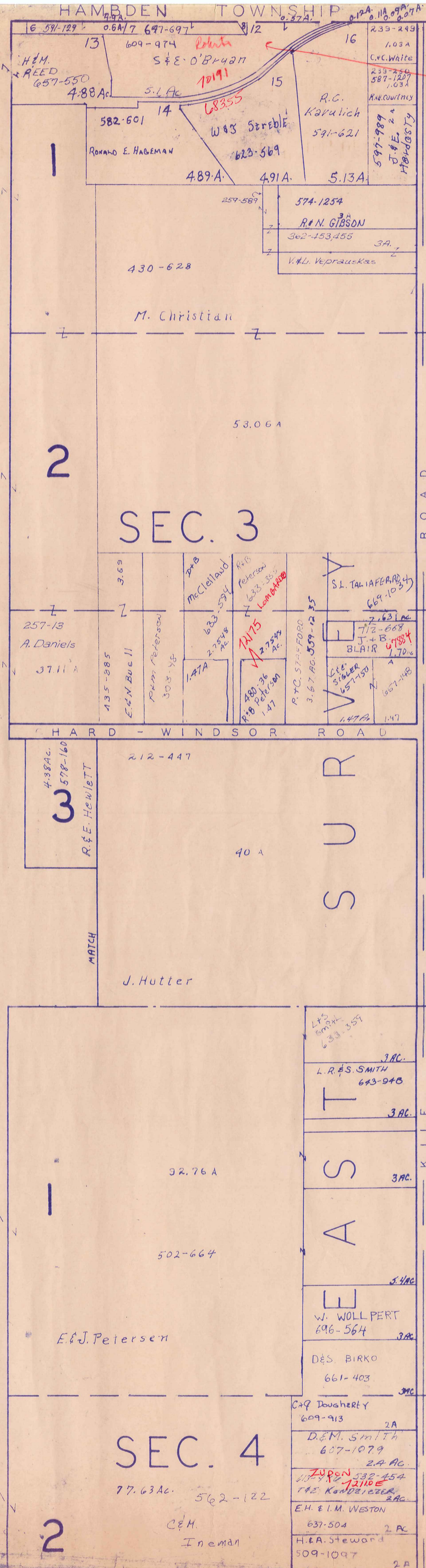
SCALE 1" = 300'

JAN 1 1984

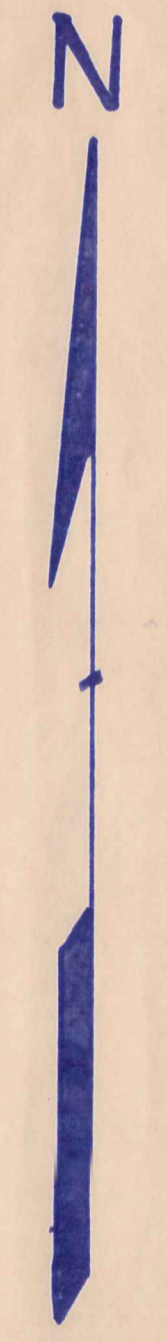
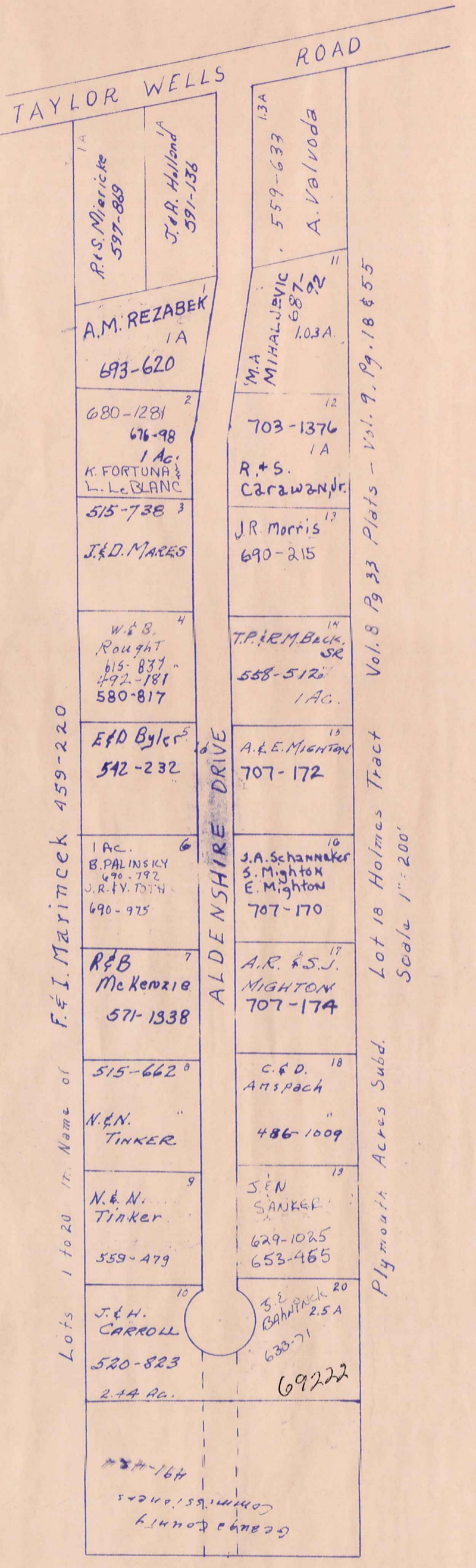
A	B	C	D
E	F	G	H
I	J	K	L
M	N	O	P

CLARIDON
TOWNSHIP

Match Line



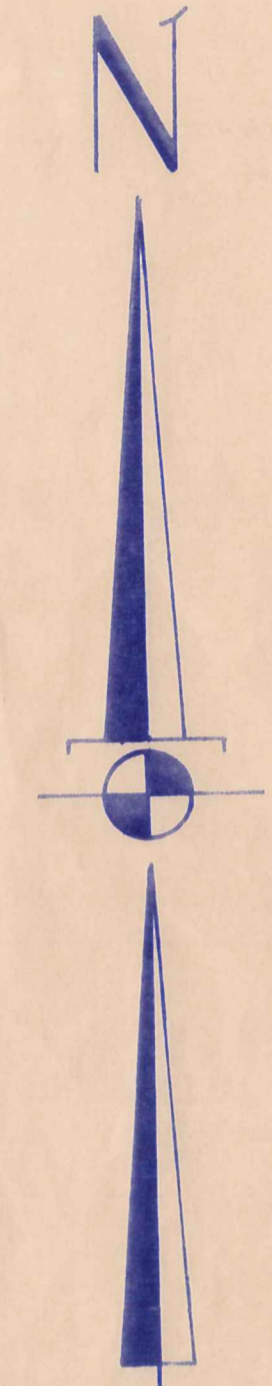
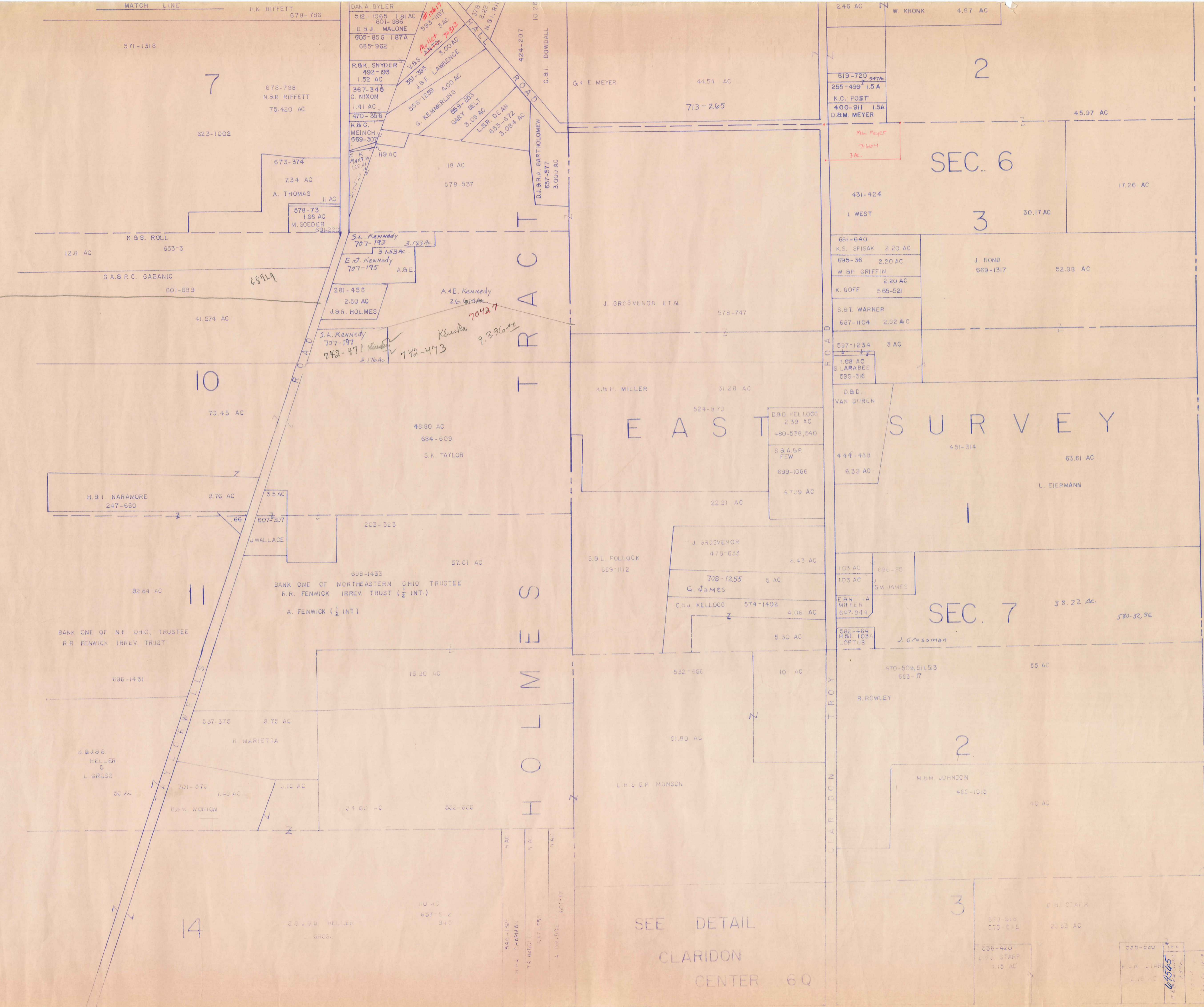
H A M D E N T O W N S H I P
 T O W N S H I P
 H U N T S G U R G E N T O W N S H I P



SCALE 1"=300'
 JAN 1, 1984

A	B	C	D
E	F	G	H
I	J	K	L
M	N	O	P

CLARIDON
 TOWNSHIP



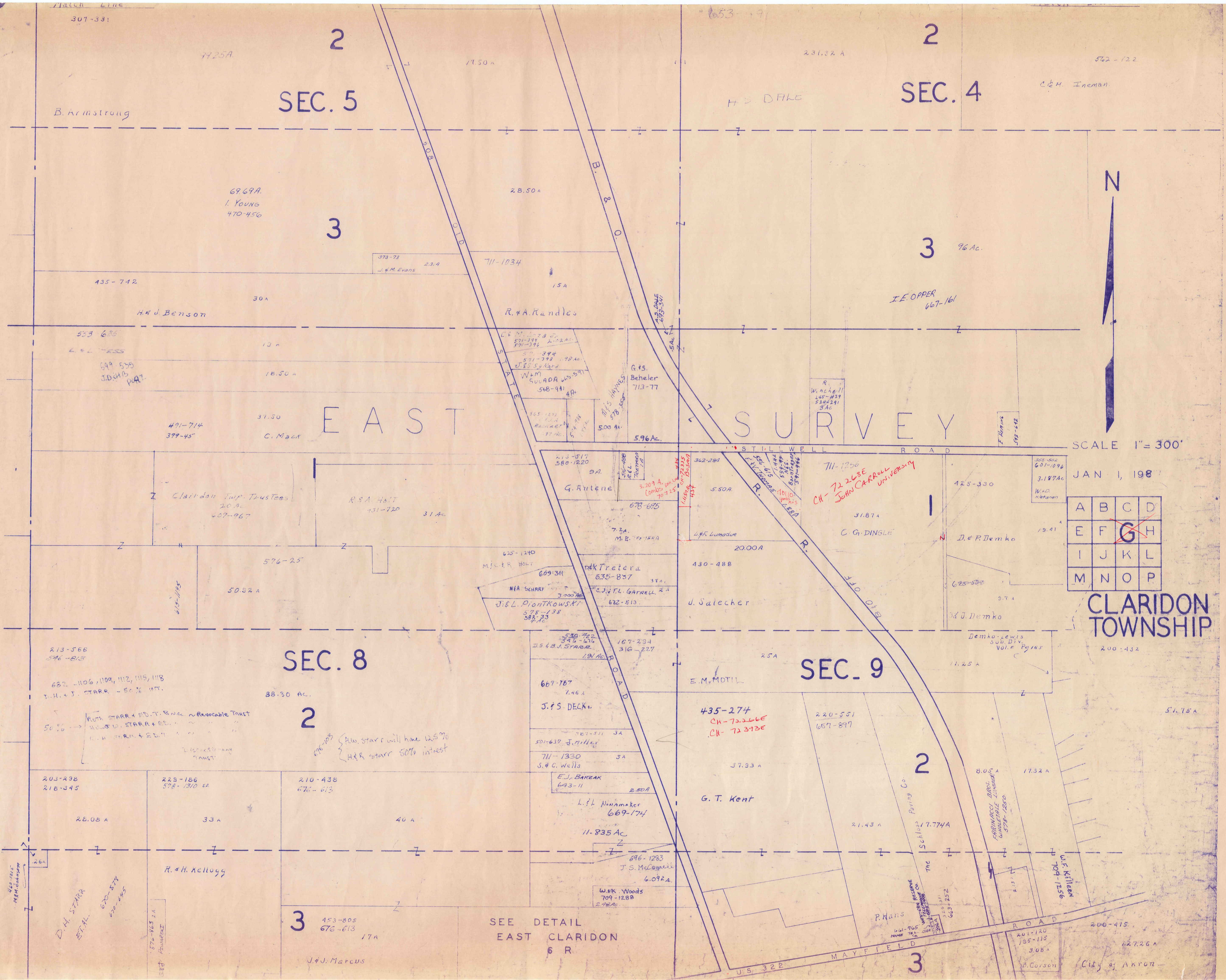
SCALE: 1" = 300'
 JAN. 1, 1984

A	B	C	D
E	F	G	H
I	J	K	L
M	N	O	P

CLARIDON
 TOWNSHIP

SEE DETAIL
 CLARIDON
 CENTER 6Q

69505
 69506
 69507
 69508
 69509
 69510
 69511
 69512
 69513
 69514
 69515
 69516
 69517
 69518
 69519
 69520
 69521
 69522
 69523
 69524
 69525
 69526
 69527
 69528
 69529
 69530
 69531
 69532
 69533
 69534
 69535
 69536
 69537
 69538
 69539
 69540
 69541
 69542
 69543
 69544
 69545
 69546
 69547
 69548
 69549
 69550
 69551
 69552
 69553
 69554
 69555
 69556
 69557
 69558
 69559
 69560
 69561
 69562
 69563
 69564
 69565
 69566
 69567
 69568
 69569
 69570
 69571
 69572
 69573
 69574
 69575
 69576
 69577
 69578
 69579
 69580
 69581
 69582
 69583
 69584
 69585
 69586
 69587
 69588
 69589
 69590
 69591
 69592
 69593
 69594
 69595
 69596
 69597
 69598
 69599
 69600



307-331

2
SEC. 5

2
SEC. 4

3

3

EAST

SURVEY

SCALE 1" = 300'

JAN 1, 198

A	B	C	D
E	F	G	H
I	J	K	L
M	N	O	P

CLARIDON TOWNSHIP

SEC. 8

SEC. 9

2

2

3

3

SEE DETAIL EAST CLARIDON 6 R

B. Armstrong

H. D. DALE

C. & M. Ineman

69.69 A.
I. Young
470-450

28.50 A

96 Ac.

435-742

30 A

711-1034

15 A

J. E. Oppen
667-161

H. & J. Benson

R. & A. Kandles

553-635

13 A

501-394
501-398
501-392

501-394
501-398
501-392

W. M. Souda
568-941

501-394
501-398
501-392

501-394
501-398
501-392

501-394
501-398
501-392

501-394
501-398
501-392

501-394
501-398
501-392

501-394
501-398
501-392

501-394
501-398
501-392

501-394
501-398
501-392

501-394
501-398
501-392

501-394
501-398
501-392

501-394
501-398
501-392

501-394
501-398
501-392

501-394
501-398
501-392

501-394
501-398
501-392

501-394
501-398
501-392

501-394
501-398
501-392

501-394
501-398
501-392

501-394
501-398
501-392

501-394
501-398
501-392

501-394
501-398
501-392

501-394
501-398
501-392

501-394
501-398
501-392

501-394
501-398
501-392

501-394
501-398
501-392

501-394
501-398
501-392

501-394
501-398
501-392

501-394
501-398
501-392

501-394
501-398
501-392

501-394
501-398
501-392

501-394
501-398
501-392

501-394
501-398
501-392

501-394
501-398
501-392

501-394
501-398
501-392

501-394
501-398
501-392

501-394
501-398
501-392

501-394
501-398
501-392

501-394
501-398
501-392

501-394
501-398
501-392

501-394
501-398
501-392

501-394
501-398
501-392

491-714
379-45
C. Mack

Clairdon Imp. Trustees
20 A
687-967

R. & A. Holt
431-720
31 A

G. Antene
580-1220
5 A

342-284
5.50 A

711-1250
CH-72268E
JOHN CARROLL UNIVERSITY

350-552
601-096
3.187 Ac
W. D. Metzen

576-25

625-1240
M. J. R. Holt
609-341

496-1000
20.00 A

31.87 A
C. G. Dingle

19.41
D. & P. Demko

50.52 A

635-837
3 A
M. K. Treiera

430-488
J. Salecher

625-588
5.7 A
D. J. Demko

213-566
596-813

682-1106, 1109, 1112, 1115, 1118
I. H. & J. Starr - 50% int.

88.30 Ac.

530-722
596-616
25.68 A. Starr

167-234
316-227
2.5 A

11.25 A
Demko-Lewis
Sub Div.
Vol. 6 Pg 105

50% → R. H. Starr & Ed. T. Starr - Revocable Trust
R. H. Starr & Ed. T. Starr

680-107
H. & J. Starr will have 12.5%
H. & J. Starr 50% interest

667-767
7.46 A
J. & S. Decker

E. M. Motil

435-274
CH-72266E
CH-72373E

220-551
657-897

51.75 A

203-298
218-345
28.08 A

225-186
378-1310
33 A

210-438
676-613
40 A

501-639
711-1330
S. & C. Wells

37.93 A
G. T. Kent

21.43 A

8.05 A
17.32 A

26 A

R. & H. Kellogg

643-11
2.50 A
E. J. Barzak

L. H. Nonemaker
669-174
11.835 Ac

17.77 A
Schloss
Farming Co.

8.05 A
17.32 A
Schloss
Farming Co.

D. H. Starr
ETAL

576-865
2 A
P. H. Starr

696-1283
J. S. McCoy

W. K. Woods
709-1288
2.98 Ac

PHANS
The
Schloss
Farming Co.

W. F. Killen
709-1256

26 A

453-805
676-613
17 A
J. & J. Marcus

SEE DETAIL EAST CLARIDON 6 R

U.S. 322

MAYFIELD ROAD

200-415

201-120
135-115
3.08 A
P. Corson

127.26 A
City of Akron

Match Line
 562-122
 77. Ac.
 C.M. Inman
 SEC. 4
 503-546 20Ac.
 J.J. & K.E. PESCH
 633-460
 J. LIOTTA 20Ac.
 F. J. HENRY
 507-509 20Ac.
 J. & M. HESS
 515-519 20Ac.
 S. & V. HOFF
 537-1250
 P. CH.
 M. & V. MEADOWS
 643-48
 2 25 Ac.

200-101
 509-615
 16.72 A
 A. Wolf
 R. Post
 500-158
 H.B. & I.M. CHAPMAN
 6,397 A
 452-733
 33.21 A
 546-20
 700 Ac.
 7
 1934
 601-289
 5 A
 O. B. WARNER
 R. Kelsey, Jr
 7

20.60 A
 672-1032
 H. Esser

STILLWELL ROAD
 496-328
 3 A
 G. C. Karch Jr.
 201-84
 50 A
 City of Akron
 200-432
 7

SEC. 9
 51.75 A
 City of Akron
 609-467
 2.04 A
 232-470
 2.04 A
 W.C. STEINBOCK
 810 JOYCE ST.
 609-253
 R. L. TOTT
 619-1167
 1.62 A
 496-456
 E.S. BYLER ST.
 1.58 A
 581-014
 W.A.C. ADZINA
 1.85 A
 585-372
 2 077
 138-1
 J. & A. Lutzger
 663-518
 1.86 A
 R. BARTUNEK
 225-316
 232-516
 Demko-Lewis
 127.8 A
 127.8 A
 7
 MAYFIELD ROAD
 7
 322
 200-415
 127.26 A
 City of Akron

SEC. 3
 200-415
 127.26 A
 City of Akron

H U N T S B U R G T O W N S H I P
 S U R V E Y
 E A S T

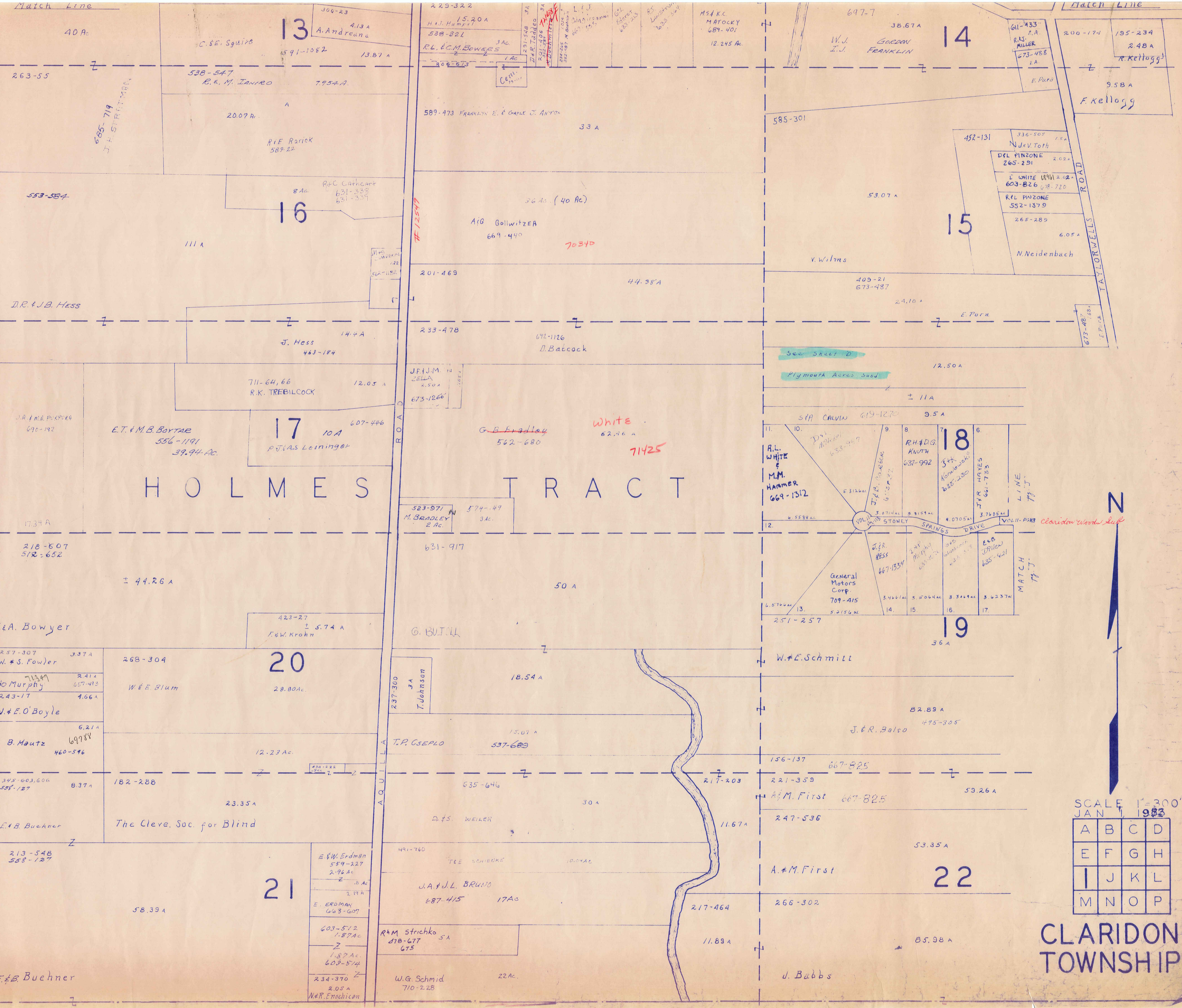


SCALE 1" = 300'
 JAN 1, 1984

A	B	C	D
E	F	G	H
I	J	K	L
M	N	O	P

CLARIDON
 TOWNSHIP

P
S
H
I
N
T
O
W
N
S
H
I
P
T
O
W
N
S
H
I
P
M
U
N
I
C
I
P
A
L

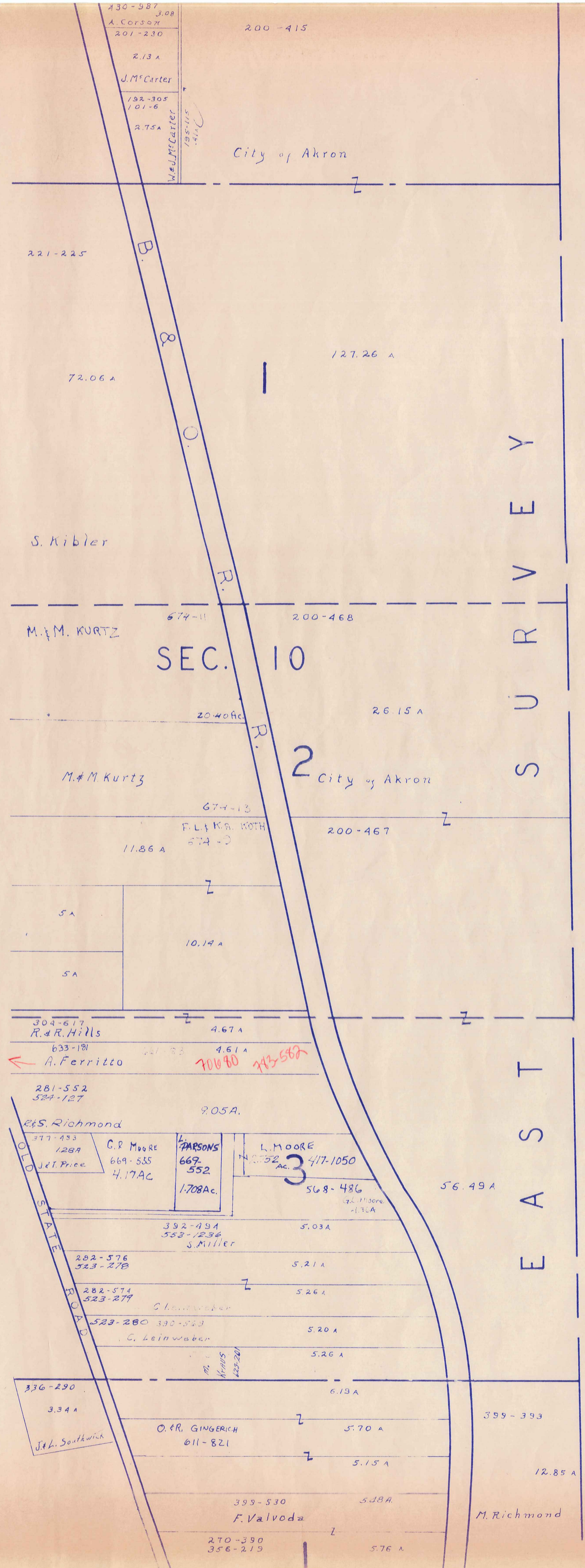


HOLMES TRACT

SCALE 1"=300'
JAN 1, 1983

A	B	C	D
E	F	G	H
I	J	K	L
M	N	O	P

CLARIDON TOWNSHIP



S U R V E Y
 T O W N S H I P
 H U N T S B U R G
 E A S T

SEC. 10

2

3

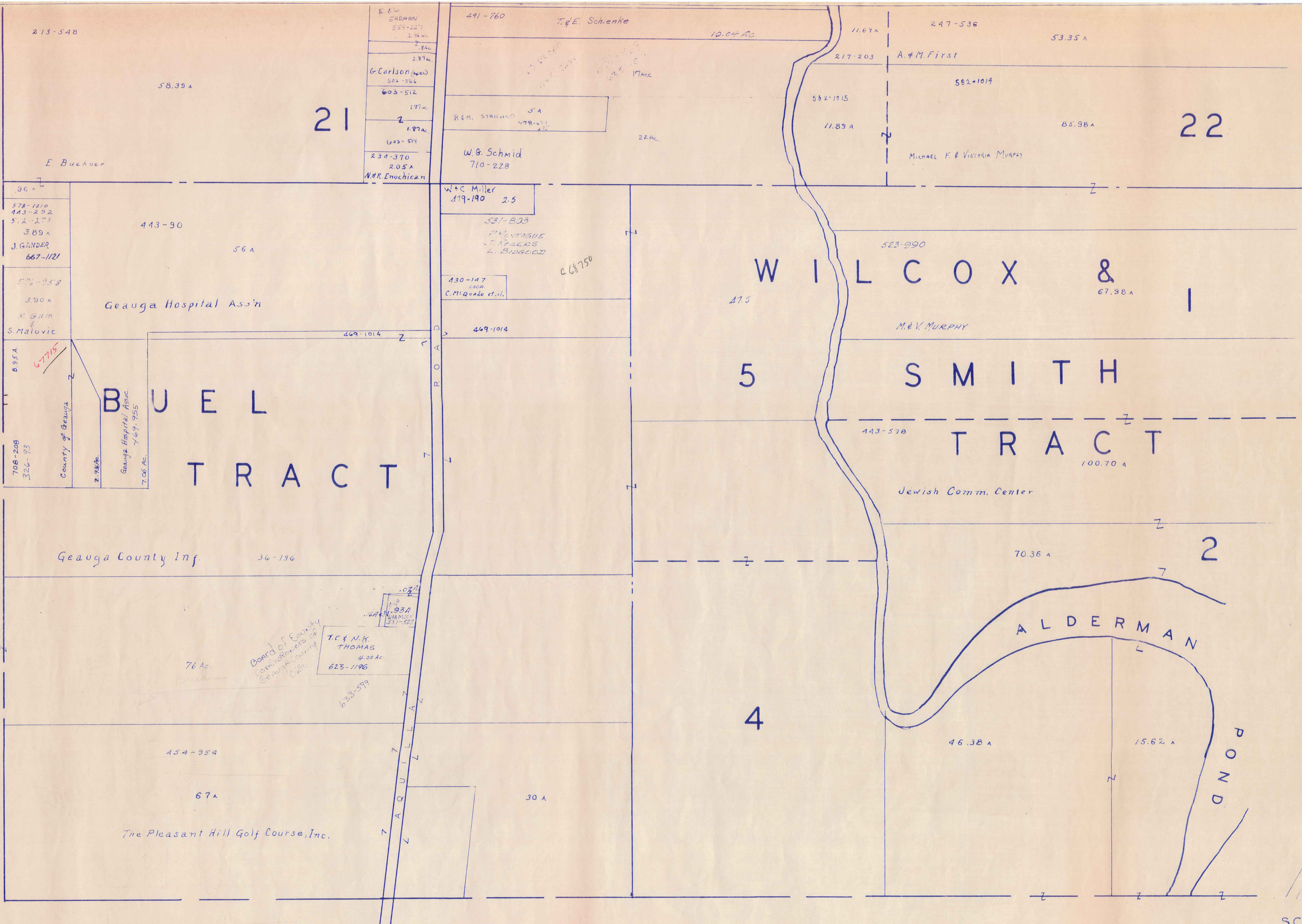


SCALE 1" = 300'
 JAN 1, 1984

A	B	C	D
E	F	G	H
I	J	K	L
M	N	O	P

CLARIDON TWP.

P
H
I
L
I
P
S
O
N
T
O
W
N
S
H
I
P
M
U
N
I
C
I
T
Y



213-548

58.39 A

21

E. Buchner

36 A
578-1210
443-292
512-273
389 A
J. GANDER
667-1121

443-90

56 A

Geauga Hospital Ass'n

572-958
390 A
N. Gam
&
S. Malovic

895A

708-208
326-93

County of Geauga
Geauga Hospital Assoc.
767-955
706 Ac.

BUELL TRACT

Geauga County Inf.

36-196

76 Ac.

Board of County Commissioners of Geauga County Ohio

T.C. & M.K. THOMAS
4.00 Ac.
623-1196

454-954

67 A

The Pleasant Hill Golf Course, Inc.

67A

633-599

30 A

491-760 T. & E. Schenke 10.04 Ac.
11.67 A
217-203 A. M. First
582-1015
17.89 A
R. M. STRICKO 5 A
478-471
22 Ac.
W. B. Schmid 710-228
W. C. Miller 119-190 2.5
531-803
MONTAGUE
T. NEALIS
L. BIDGLEY
430-147
130 A
C. McQuade et al.
469-1014
469-1014

247-536 53.35 A
582-1014
85.98 A
MICHAEL F. & VICTORIA MURPHY
523-990
67.98 A
M. & V. MURPHY
443-578
70.36 A
46.38 A
15.62 A

WILCOX & SMITH TRACT

5 SMITH TRACT

Jewish Comm. Center

70.36 A

2

ALDERMAN POND

4

46.38 A

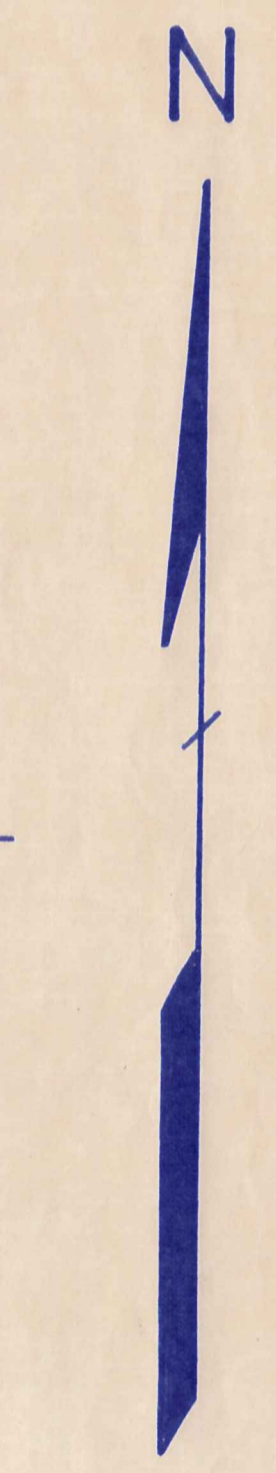
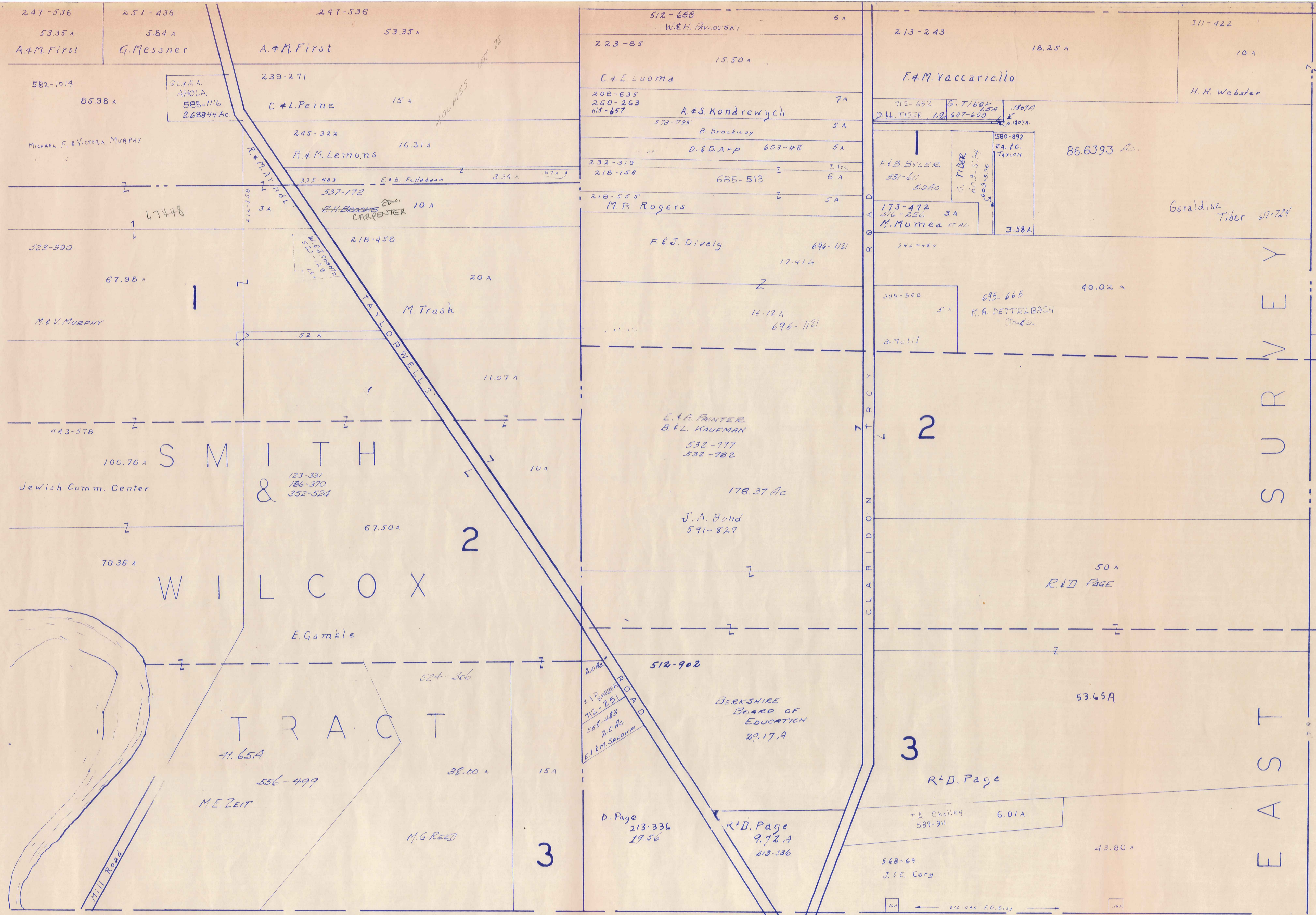
15.62 A

BURTON TOWNSHIP

SCALE 1" = 300'
JAN 1, 1984

A	B	C	D
E	F	G	H
I	J	K	L
M	N	O	P

CLARIDON TWP

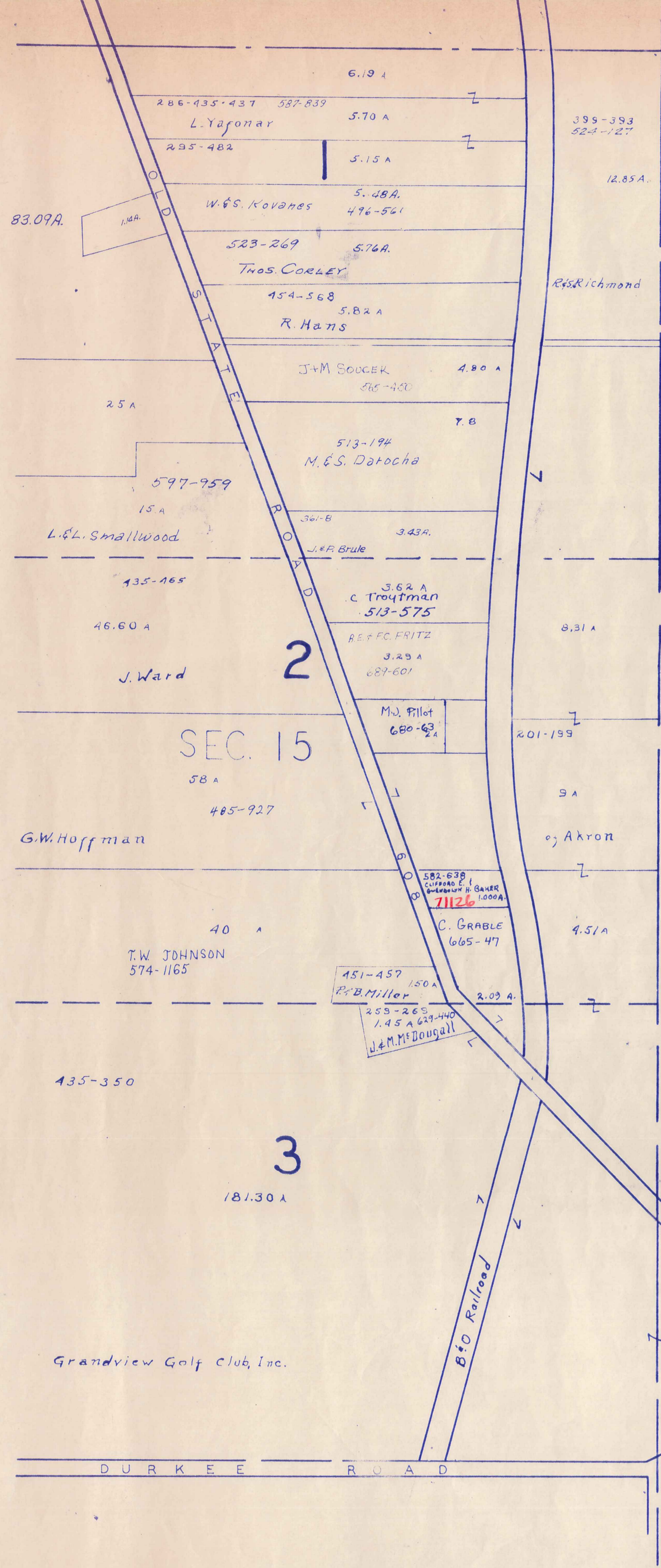


SCALE 1" = 300'
JAN 1, 1987

BURTON TOWNSHIP

A	B	C	D
E	F	G	H
I	J	K	L
M	N	O	P

CLARIDON TWP.



H U N T S B U R G T O W N S H I P

BURTON TWP



SCALE 1" = 300'
JAN 1, 1984

A	B	C	D
E	F	G	H
I	J	K	L
M	N	O	P

CLARIDON TWP.

EAST CLARIDON
AND VICINITY

CLARIDON TP.

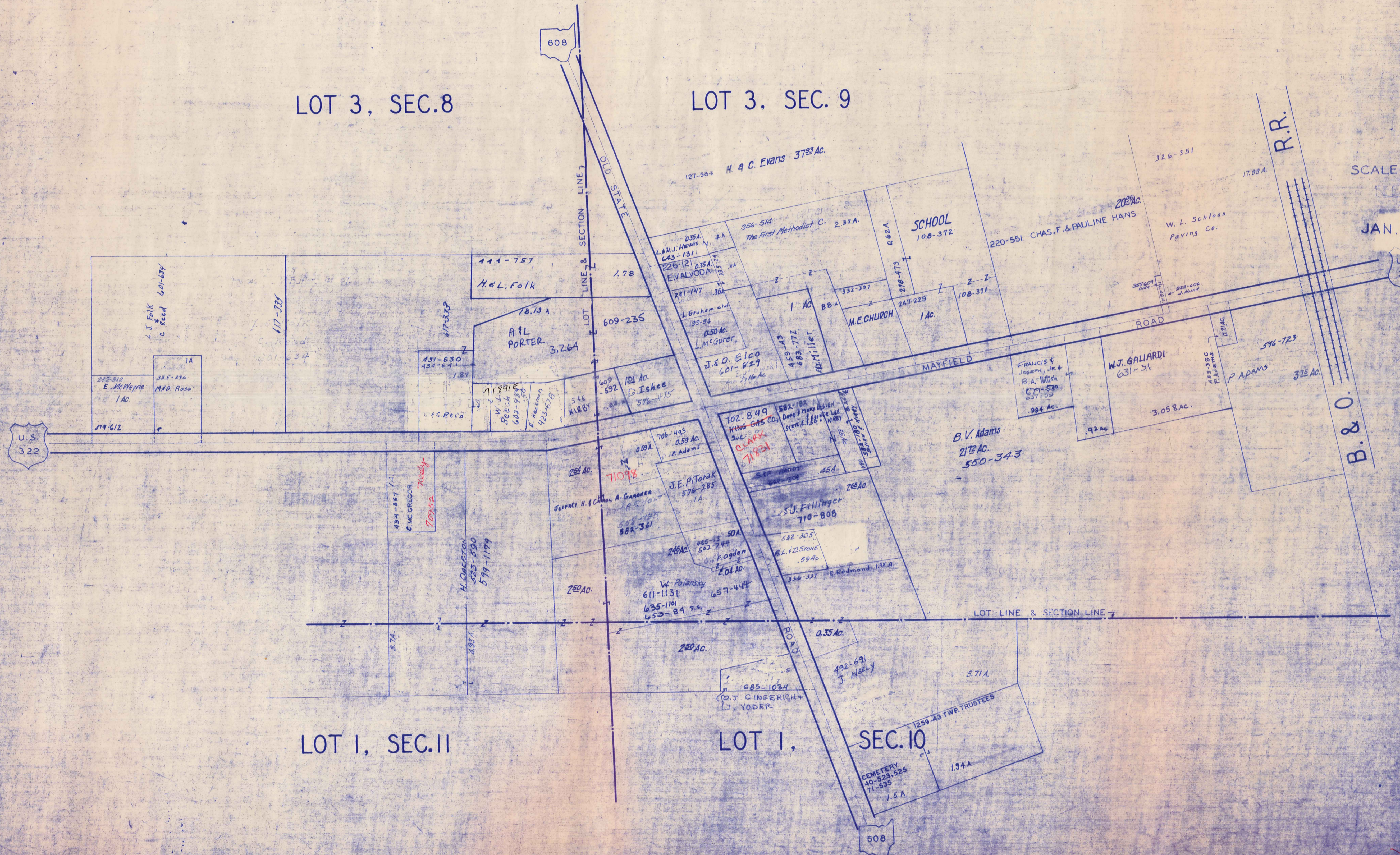
EAST CLARIDON
AND VICINITY

LOT 3, SEC. 8

LOT 3, SEC. 9

SCALE 1 in. = 25 ch. = 165'

JAN. 1, 1934



6-B

SCALE 1 IN. = 30 FT.



COUNT AQUILLA HOME

ROAD

60'

LAKE AQUILLA SUBDIVISION NO 12 LAKE AQUILLA SUBDIVISION NO 1 ADDITION
VOL. 1 PGS 50 & 51 REC. OF PLATS VOL. 4 PGS 23 & 24 REC. OF PLATS



NOW

AQUILLA VILLAGE VOL. 4 PAGES 26-27 REC. OF PLATS

JAN. 1, 1984

6-S

SEE 6-S-CTR.

AQUILLA VILLAGE VOL. 4, PAGES 26-27 REC. OF PLATS
FORMERLY
LAKE AQUILLA ESTATES COMPANY'S SUBDIVISION NO. 1

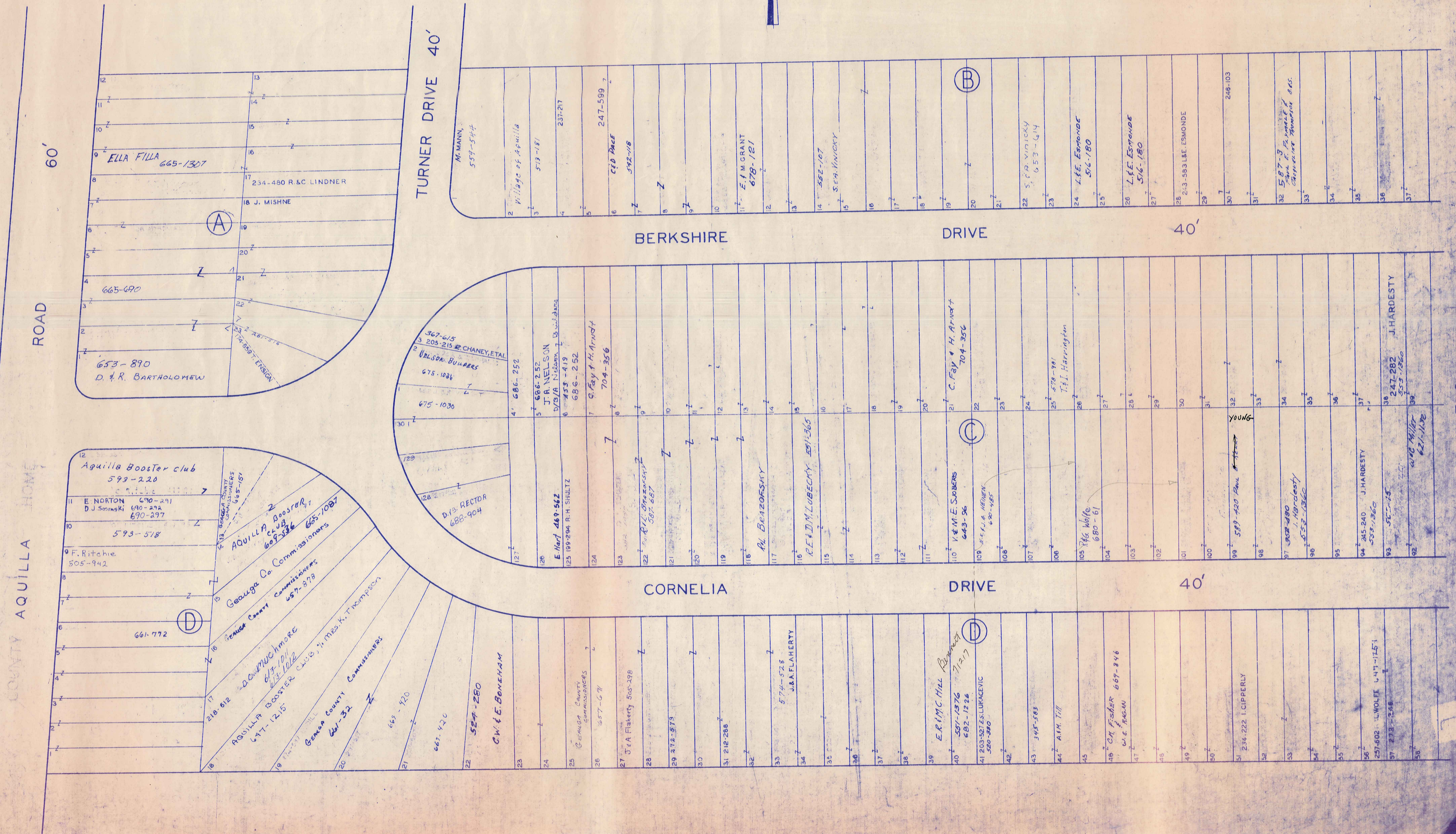
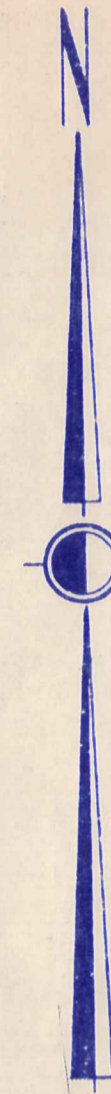
AND RESUBDIVISION OF BLOCKS I & J AND SUBLOTS
NOS. 125 TO 141 INCLUSIVE IN BLOCK D

PART OF ORIGINAL LOT NOS. 9 & 10 OF THE HOLMES TRACT CLARIDON TOWNSHIP

VOL. 2 PAGES 6, 7, 8, 9, 10, 11, 12, 19 & 33 REC. OF PLATS

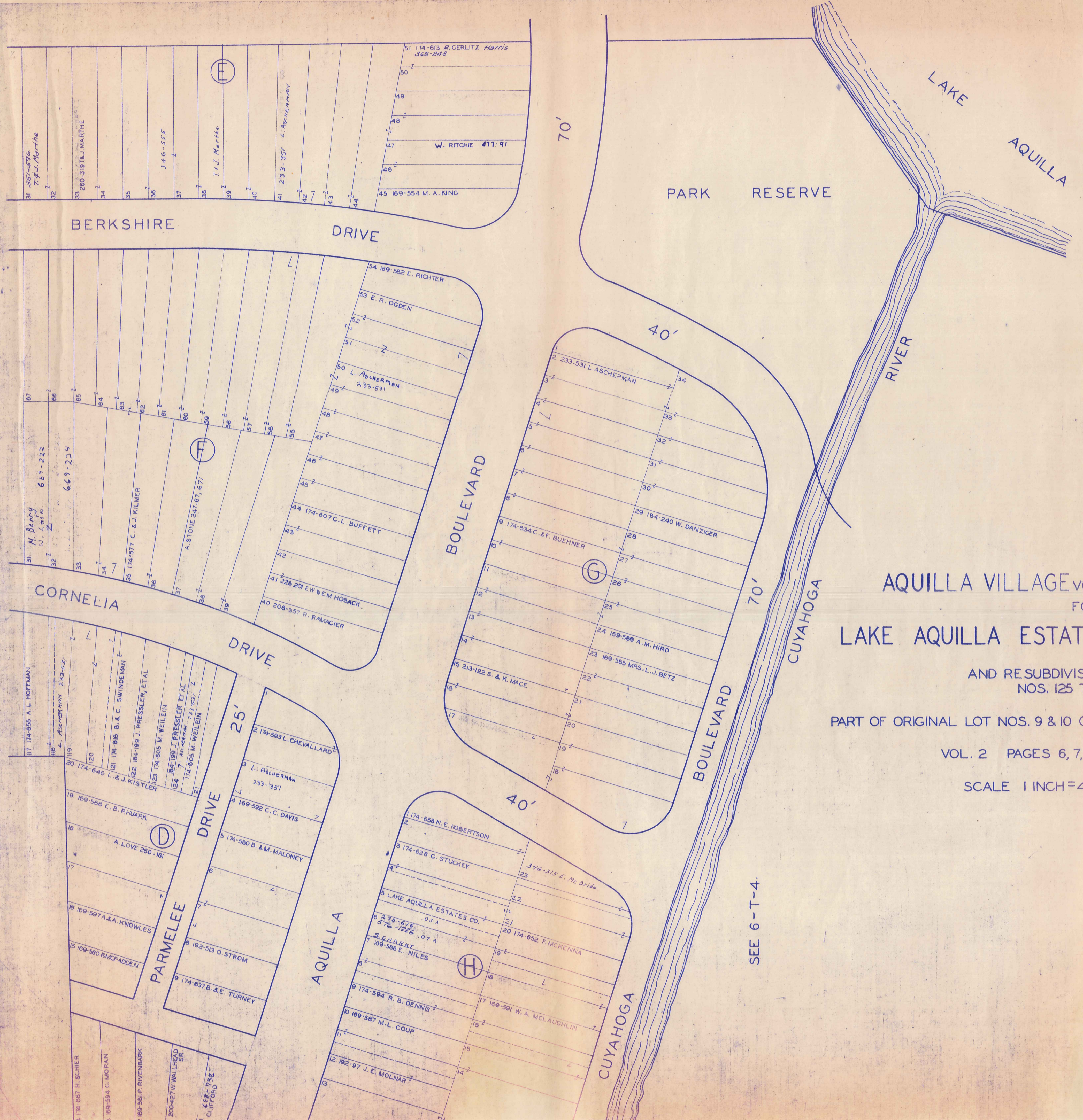
SCALE 1 INCH = 40 FEET

JAN. 1, 1924



SEE 6-T-2

SEE 6-T-2



AQUILLA VILLAGE VOL. 4 PAGES 26-27 REC. OF PLATS
 FORMERLY
 LAKE AQUILLA ESTATES COMPANY'S SUBDIVISION NO. 1

AND RESUBDIVISION OF BLOCKS I & J AND SUBLOTS
 NOS. 125 TO 141 INCLUSIVE IN BLOCK D

PART OF ORIGINAL LOT NOS. 9 & 10 OF THE HOLMES TRACT CLARIDON TOWNSHIP

VOL. 2 PAGES 6, 7, 8, 9, 10, 11, 12, 19 & 33 REC. OF PLATS

SCALE 1 INCH = 40 FEET

JAN. 1, 1934

SEE 6-T-4

AQUILLA VILLAGE VOL. 4 PAGES 26-27 REC. OF PLATS
FORMERLY
LAKE AQUILLA ESTATES COMPANY'S SUBDIVISION NO. 1

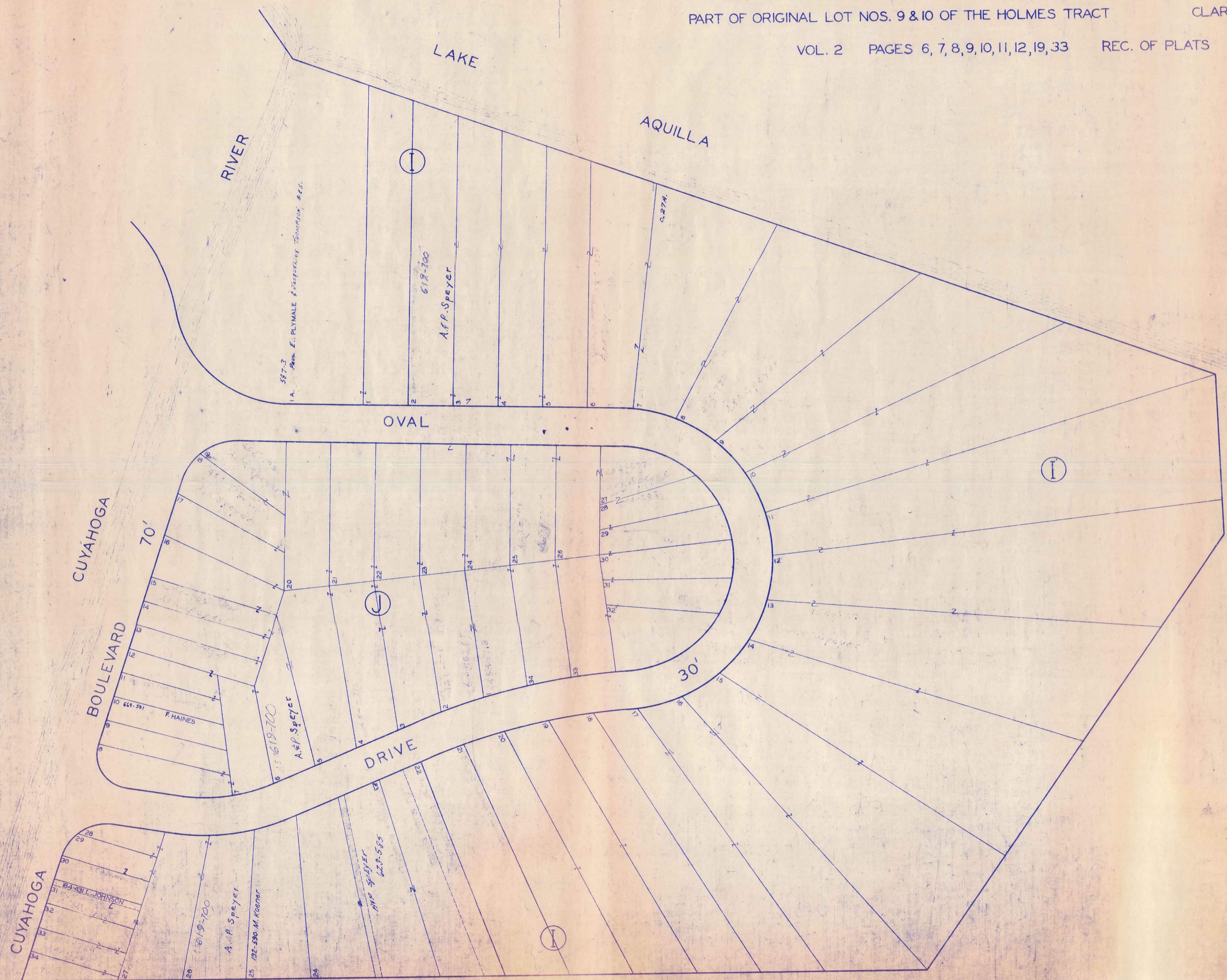
AND RESUBDIVISION OF BLOCKS I & J AND SUBLOTS
NOS. 125 TO 141 INCLUSIVE IN BLOCK D

PART OF ORIGINAL LOT NOS. 9 & 10 OF THE HOLMES TRACT

CLARIDON TOWNSHIP

VOL. 2 PAGES 6, 7, 8, 9, 10, 11, 12, 19, 33 REC. OF PLATS

SEE 6-T-3



SCALE 1 INCH = 40 FEET

JAN. 11, 1984

6-T-4